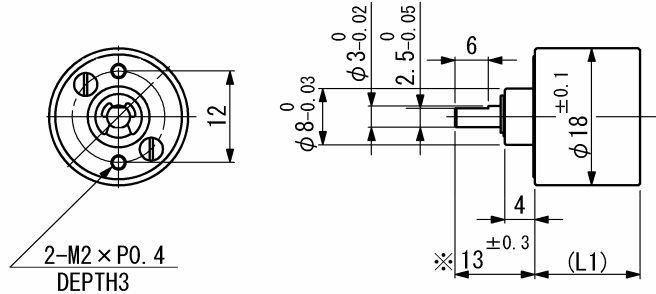


SSG18

Spur gearhead



Dimension in mm

Note) Dimension marked ※ is measured with shaft pushed against gearhead.

For combination with motors: **SCL18-25, SCL18-33**

For combination with motor-tachogenerator: **SCL18-44**

General specifications

	SSG18	
Housing material	Metal	
Geartrain material	Metal	
Recommended max. input speed	4000	rpm
Operating temperature range	-10...+60	°C
Max. backlash at no-load, 4 stages	≤ 4	°
Bearings on output shaft	Sintered sleeve bearings	
Max. shaft radial load (10 mm from flange)	4	N
Max. shaft axial load	2	N
Max. shaft press fit force	30	N
Shaft radial play	≤ 0.03	mm
Shaft axial play	≤ 0.2	mm

Ratio (nominal)	Stage	Gearhead length, L1 [mm]	Gearhead weight [g]	Max. allowable torque [mNm]		Length with motor [mm]				Efficiency [%]	Direction of rotation	
				Continuous	Intermittent	SCL18-25	SCL18-33	SCL18-44				
15 : 1	3	12.5	16.4	40	80	38	47.5	56.7			73	≠
27 : 1	3	12.5	16.4	40	80	38	47.5	56.7			73	≠
47 : 1	4	14.9	19.2	40	80	40.4	49.9	59.1			66	=
75 : 1	4	14.9	19.2	40	80	40.4	49.9	59.1			66	=
95 : 1	4	14.9	19.2	40	80	40.4	49.9	59.1			66	=

V01

Namiki Precision Jewel Co.,Ltd

TEL: +81-3-5390-7619 FAX: +81-3-5390-8082

URL: www.namiki.net/

E-mail: kbinfo@namiki.net

Specifications subject to change without notice