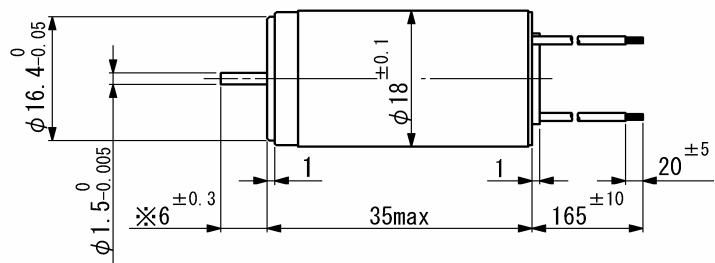
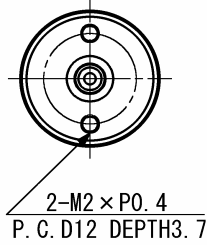


SCL18-33

Precious metal commutation

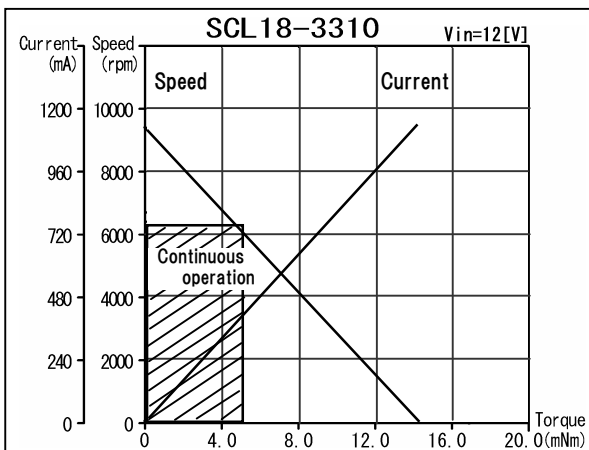


Weight 57 g
Dimension in mm

Note) Dimension marked ※ is measured with shaft pushed against motor.

For combination with gearheads: SSG18, SPG16

Ordering number	SCL18					
	-3303	-3306	-3310	-3318	-3328	
1 Nominal voltage	6	9	12	15	18	V
2 Terminal resistance	3.0	6.2	10	18	28	Ω
3 Output power	2.9	3.2	3.5	3.1	2.9	W
4 Efficiency	84	85	83	85	84	%
5 No-load speed	8150	7980	9420	8050	7970	rpm
6 No-load current	14	9	9	5	5	mA
7 Stall torque	13.8	15.4	14.1	14.6	13.9	mNm
8 Friction torque	0.096	0.096	0.11	0.096	0.096	mNm
9 Back-EMF constant	0.73	1.1	1.3	1.9	2.2	mV/rpm
10 Torque constant	7.0	10.7	12.1	17.7	21.4	mNm/A
11 Slope of N-T curve	590	520	670	550	570	rpm/mNm
12 Coil inductance	0.043	0.10	0.13	0.28	0.41	mH
13 Mechanical time constant	8	8	7	8	8	ms
14 Rotor inertia	1.3	1.5	1.0	1.4	1.4	gcm ²
Continuous operation						
15 Max. torque	5.3	5.6	4.9	5.5	5.3	mNm



General specifications

16 Operating temperature	-20...+60	°C
17 Max. coil temperature	+80	°C
18 Thermal resistances	$R_{th1} = 5, R_{th2} = 20$	K/W
19 Bearings type	Sintered sleeves	
20 Max. shaft radial load	1.2 (5 mm)	N
21 Max. shaft axial load	0.2	N
22 Max. axial load at standstill	9.8	N
23 Shaft radial play	0.05	mm
24 Shaft axial play	0.03...0.2	mm

Options:

Lead wires length, shaft length, special coils, commutator with capacitors.

V01

Namiki Precision Jewel Co.,Ltd

TEL: +81-3-5390-7619 FAX: +81-3-5390-8082

URL: www.namiki.net/

E-mail: kbinfo@namiki.net

Specifications subject to change without notice