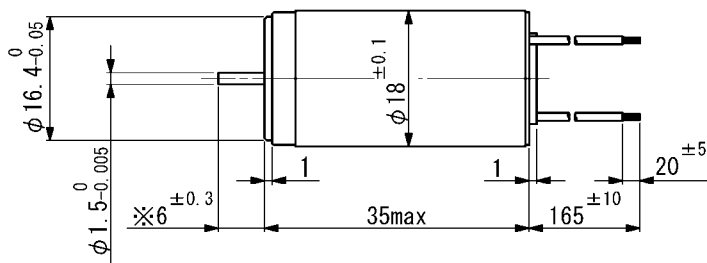
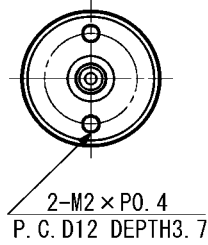


SCL18-33

Precious metal commutation



Weight 57 g
Dimension in mm

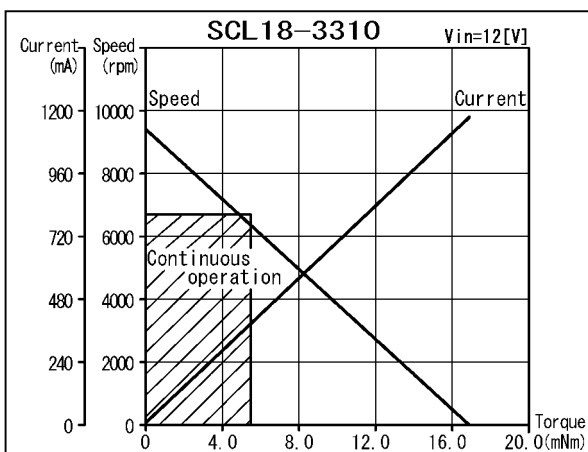
Note) Dimension marked ※ is measured with shaft pushed against motor.

For combination with gearheads: SSG18, SPG16

Ordering number			SCL18-3306	SCL18-3310
1 Nominal voltage			9	12 V
2 Terminal resistance			6.2	10.2 Ω
3 Output power			3.2	3.5 W
4 Efficiency			85	83 %
5 No-load speed			7980	9420 rpm
6 No-load current			9	9 mA
7 Stall torque			15.4	14.09 mNm
8 Friction torque			0.1	0.11 mNm
9 Back-EMF constant			1.12	1.26 mV/rpm
10 Torque constant			10.7	12.07 mNm/A
11 Slope of N-T curve			520	669 rpm/mNm
12 Coil inductance			0.12	0.13 mH
13 Mechanical time constant			8.3	7.2 ms
14 Rotor inertia			1.53	1.03 gcm ²

Continuous operation

15 Speed range			6400	6300 rpm
16 Max. torque			5.68	4.97 mNm



General specifications

17 Operating temperature	-20...+60	°C
18 Max. coil temperature	+80	°C
19 Thermal resistances	R _{th1} = 5, R _{th2} = 20	K/W
20 Bearings type	Sintered sleeves	
21 Max. shaft radial load	1.2 (5 mm)	N
22 Max. shaft axial load	0.2	N
23 Max. axial load at standstill	9.8	N
24 Shaft radial play	0.05	mm
25 Shaft axial play	0.03...0.2	mm

Options: Lead wires length, shaft length, special coils, commutator with capacitors.