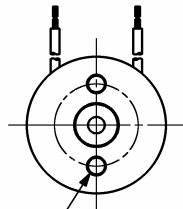
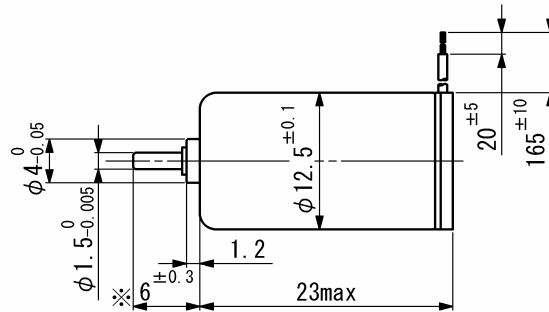


SCL12-22

Precious metal commutation



2-M1.7 × P0.35
P. C. D7.5 DEPTH1.2

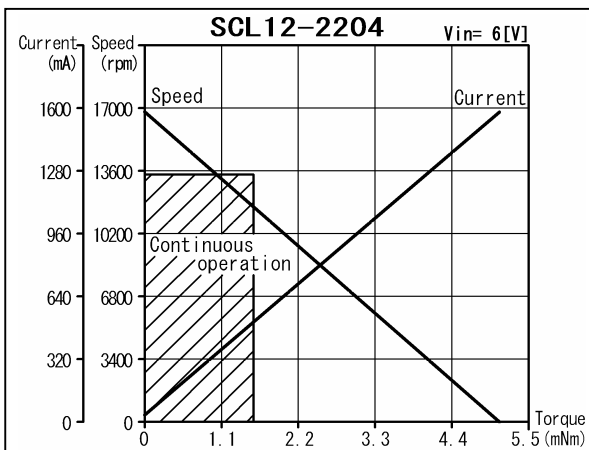


Weight 13.7 g
Dimension in mm

Note) Dimension marked ※ is measured with shaft pushed against motor.

For combination with gearheads: SSG12, SPG12

Ordering number	SCL12				
	-2202	-2204	-2212	-2222	-22H6
1 Nominal voltage	3	6	9	12	24 V
2 Terminal resistance	2.0	3.8	12	22	160 Ω
3 Output power	1.1	2.3	1.6	1.6	0.84 W
4 Efficiency	67	72	75	75	67 %
5 No-load speed	11770	16800	14340	14000	12300 rpm
6 No-load current	50	35	14	10	5 mA
7 Stall torque	3.5	5.1	4.2	4.3	2.6 mNm
8 Friction torque	0.12	0.12	0.080	0.080	0.090 mNm
9 Back-EMF constant	0.25	0.35	0.62	0.84	1.9 mV/rpm
10 Torque constant	2.4	3.3	5.9	8.0	18.0 mNm/A
11 Slope of N-T curve	3390	3260	3400	3240	4730 rpm/mNm
12 Coil inductance	0.025	0.050	0.16	0.29	2.3 mH
13 Mechanical time constant	12	12	10	10	10 ms
14 Rotor inertia	0.33	0.34	0.27	0.29	0.20 gcm ²
Continuous operation					
15 Max. torque	1.6	1.6	1.6	1.6	1.3 mNm



General specifications

16 Operating temperature	-20...+60	°C
17 Max. coil temperature	+80	°C
18 Thermal resistances	R _{th1} = 10, R _{th2} = 35	K/W
19 Bearings type	Sintered sleeves	
20 Max. shaft radial load	1.2 (5 mm)	N
21 Max. shaft axial load	0.2	N
22 Max. axial load at standstill	9.8	N
23 Shaft radial play	0.05	mm
24 Shaft axial play	0.03...0.2	mm

Options: Lead wires length, terminals instead of lead wires, shaft length, special coils, commutator with capacitors.

V01

Namiki Precision Jewel Co.,Ltd

TEL: +81-3-5390-7619 FAX: +81-3-5390-8082

URL: www.namiki.net/

E-mail: kbinfo@namiki.net

Specifications subject to change without notice