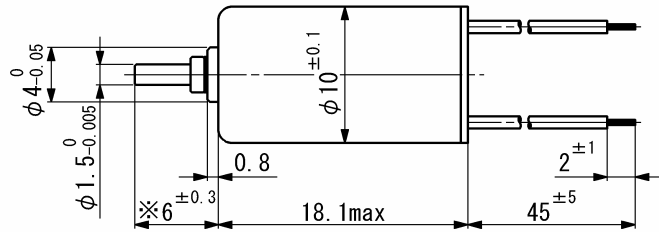
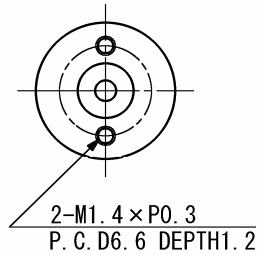


# SCL10-18

Precious metal commutation



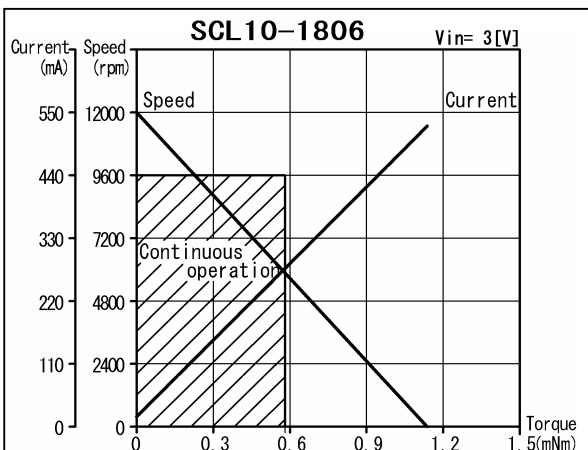
Weight 7.7 g

Dimension in mm

Note) Dimension marked ※ is measured with shaft pushed against motor.

For combination with gearheads: **SSG10, SPG10**

Ordering number	SCL10					
			-1806	-1810	-1818	-1836
1 Nominal voltage			3	4	6	9 V
2 Terminal resistance			5.7	10	18	36 $\Omega$
3 Output power			0.36	0.36	0.47	0.52 W
4 Efficiency			62	59	62	63 %
5 No-load speed			12000	12800	15380	16440 rpm
6 No-load current			24	22	15	11 mA
7 Stall torque			1.1	1.1	1.2	1.2 mNm
8 Friction torque			0.055	0.062	0.055	0.055 mNm
9 Back-EMF constant			0.24	0.30	0.37	0.52 mV/rpm
10 Torque constant			2.3	2.8	3.6	5.0 mNm/A
11 Slope of N-T curve			10480	12010	13320	13600 rpm/mNm
12 Coil inductance			0.066	0.090	0.16	0.32 mH
13 Mechanical time constant			12	11	13	13 ms
14 Rotor inertia			0.11	0.090	0.090	0.091 gcm <sup>2</sup>
<b>Continuous operation</b>						
15 Max. torque			0.72	0.66	0.63	0.62 mNm



### General specifications

16 Operating temperature	-20...+60	°C
17 Max. coil temperature	+80	°C
18 Thermal resistances	$R_{th1} = 11, R_{th2} = 57$	K/W
19 Bearings type	Sintered sleeves	
20 Max. shaft radial load	1.2 (5 mm)	N
21 Max. shaft axial load	0.2	N
22 Max. axial load at standstill	9.8	N
23 Shaft radial play	0.05	mm
24 Shaft axial play	0.03...0.2	mm

### Options:

Lead wires length, shaft length, special coils, commutator with capacitors.

V01

Namiki Precision Jewel Co.,Ltd

TEL: +81-3-5390-7619 FAX: +81-3-5390-8082

URL: www.namiki.net/

E-mail: kbinfo@namiki.net

Specifications subject to change without notice