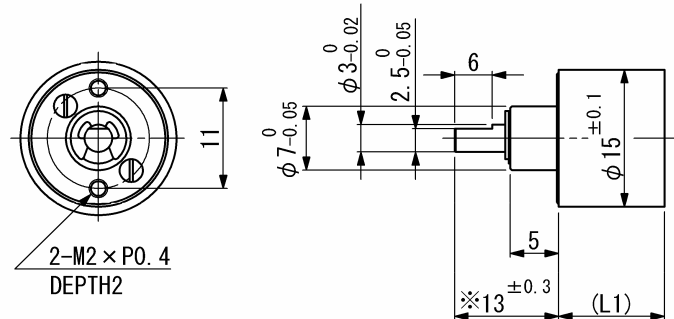


SSG15

Spur gearhead



Dimension in mm

Note) Dimension marked ※ is measured with shaft pushed against gearhead.

For combination with motors: SCL16-15, SCL16-25, SCL16-30, SCL17-30

For combination with motor-tachogenerators: SCL16-44, SCL17-44

General specifications

SSG15

Housing material	Metal	
Geartrain material	Metal	
Recommended max. input speed	6000	rpm
Operating temperature range	-10...+60	°C
Max. backlash at no-load, 5 stages	≤ 5	°
Bearings on output shaft	Sintered sleeve bearings	
Max. shaft radial load (10 mm from flange)	4	N
Max. shaft axial load	2	N
Max. shaft press fit force	30	N
Shaft radial play	≤ 0.03	mm
Shaft axial play	≤ 0.2	mm

Ratio (nominal)	Stage	Gearhead length, L1 [mm]	Gearhead weight [g]	Max. allowable torque [mNm]		Length with motor [mm]						Efficiency [%]	Direction of rotation
				Continuous	Intermittent	SCL16-15	SCL16-25	SCL16-30	SCL17-30	SCL16-44	SCL17-44		
29 : 1	3	9.6	8.9	15	30	27.1	34.6	41	41	54.1	54.2	73	≠
49 : 1	4	11.6	10.3	24	60	29.1	36.6	43	43	56.1	56.2	66	=
71 : 1	4	11.6	10.3	24	60	29.1	36.6	43	43	56.1	56.2	66	=
94 : 1	4	11.6	10.3	24	60	29.1	36.6	43	43	56.1	56.2	66	=
198 : 1	5	13.6	11.5	24	60	31.1	38.6	45	45	58.1	58.2	59	≠

V01

Namiki Precision Jewel Co.,Ltd

TEL: +81-3-5390-7620 FAX: +81-3-5390-8082

URL: www.namiki.net/

E-mail: kboinfo@namiki.net

Specifications subject to change without notice