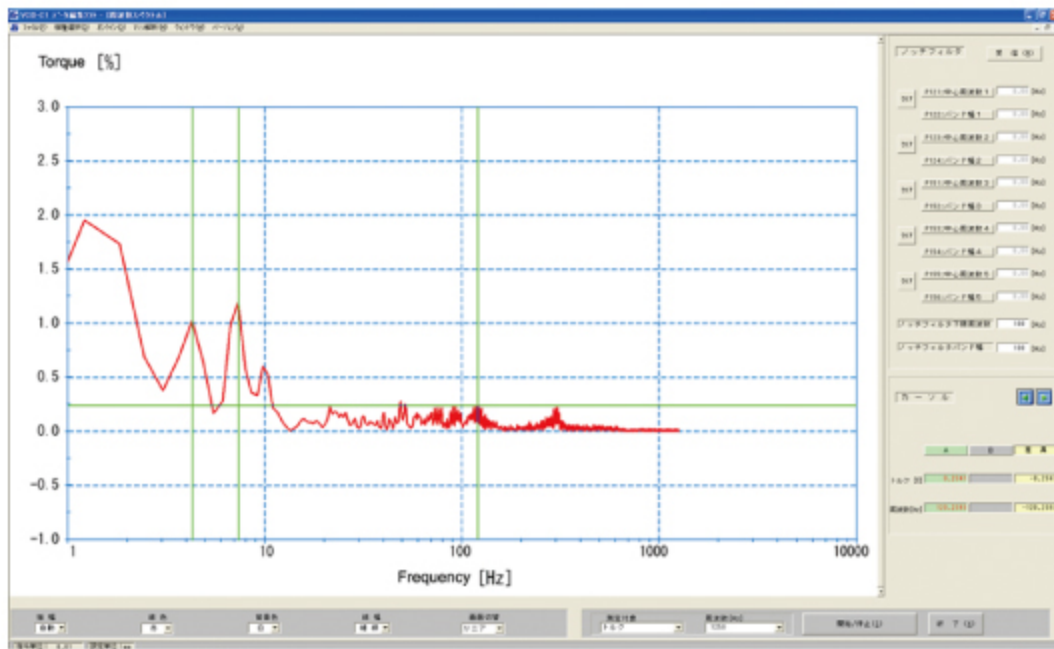


SSP - 12

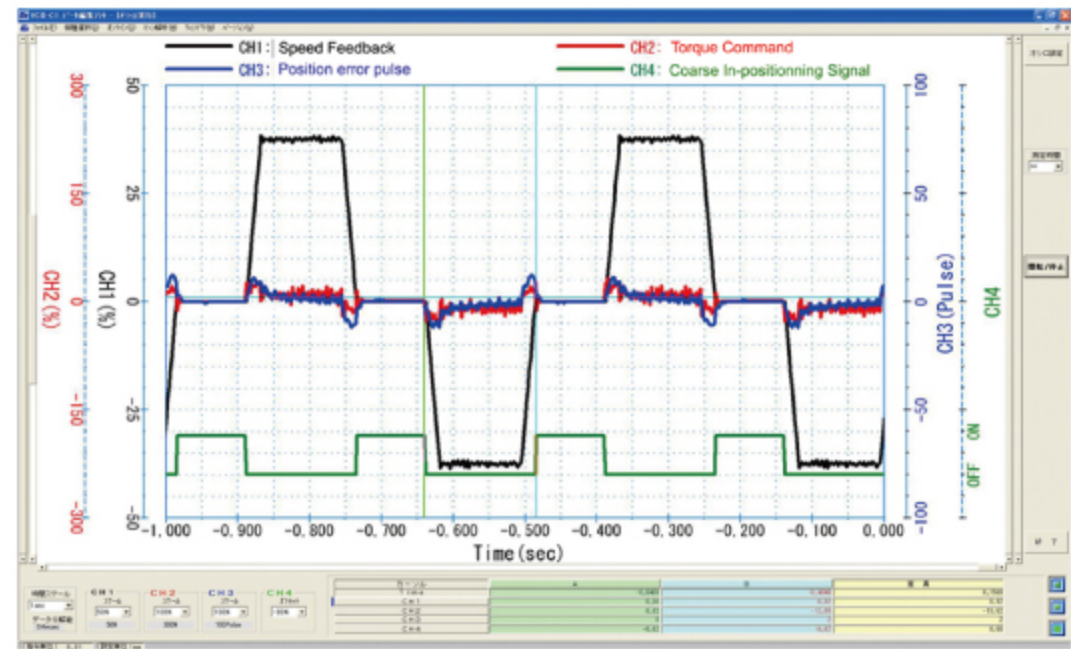
Tough & Smart Servo-Driver for Position, Speed, Torque Control

Features

- No trip even when servo-locked during over 30 seconds
- Feedforward torque control
- Free from torque fluctuation
- Speed control parameters auto-tuning
- Resonant restraint control (5-notch filters)
- Position / Speed / Torque control mode
- Electrical gear
- Internal pulse train command including (7 pts.)
- I / O Type : RS422 (16-axes daisy chain)
- PC editing
- 4ch oscilo-function



For suppressing machine resonance



4ch oscilo-waveforms observable

Specification

Model No.	SSP-12
Dimensions	W 102 × H 125 × D 39.8 (mm)
Input power supply	Voltage : DC 12 V ± 5% (Torque guaranteed), Current : 2.5 A
Output current	Continuous : 0.8 A (rms), Max. : 1.6 A (rms)
Main circuit method	FET full bridge (Sinusoidal PWM control)
Speed fluctuation	Load : ±0.1 %, Voltage : ±0.02%, Temperature : ±0.3 %
Speed control range	Over 1 : 2000

Appearance

